

Internet Explorer – Compatibility View

Some of our experiments require the use of Internet Explorer (those based on LabVIEW), either version 6 or a more recent version with Compatibility View enabled.

This is clear as soon as the user opens the booking system for these experiments, as it will only take a fraction of the available space in the window, as shown in Figure 1.

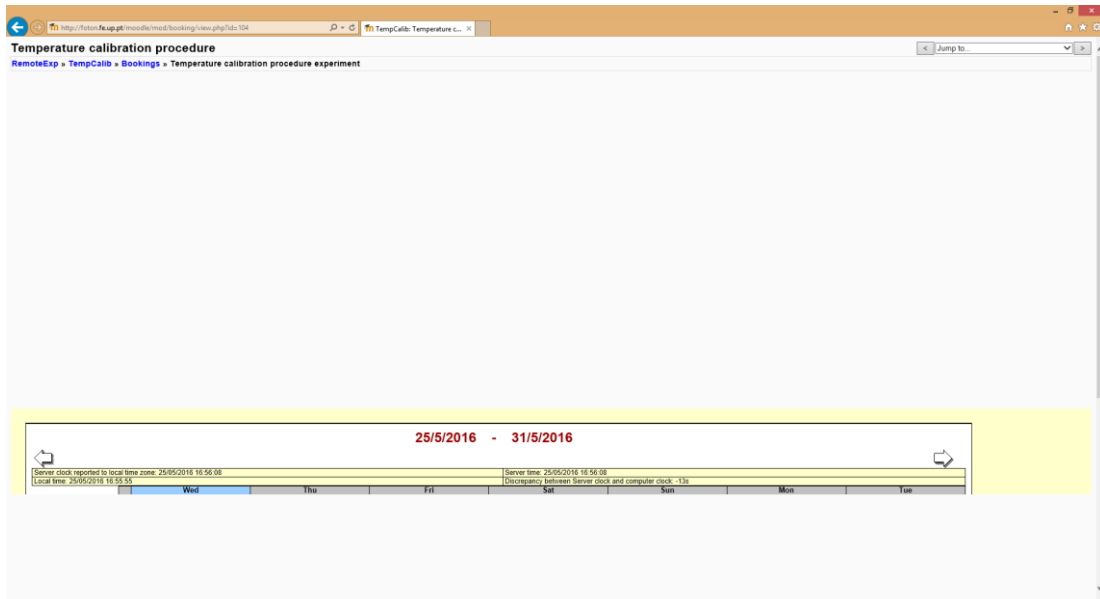


Figure 1. Booking system when the compatibility view is disabled

To enable Compatibility View, the user should open the “Compatibility View settings” dialog. It is accessed, on Internet Explorer 11, through the gear menu, Figure 2.

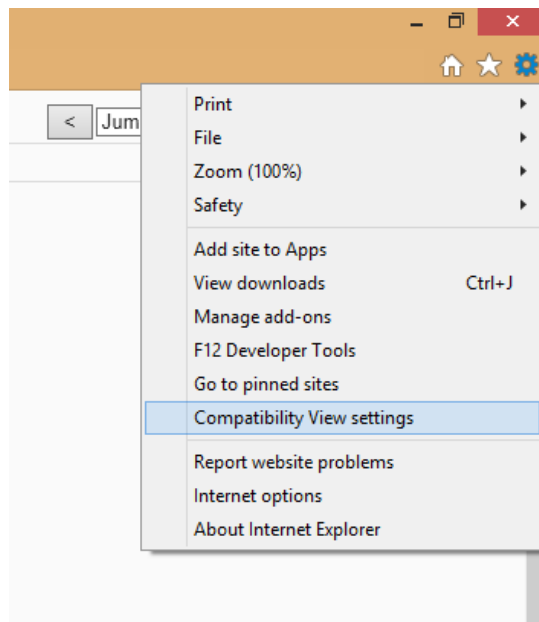


Figure 2. Compatibility View settings menu (Internet Explorer 11)

In the new dialog, add FEUP's domain (*fe.up.pt*) to the Compatibility View list, as shown in Figure 3.

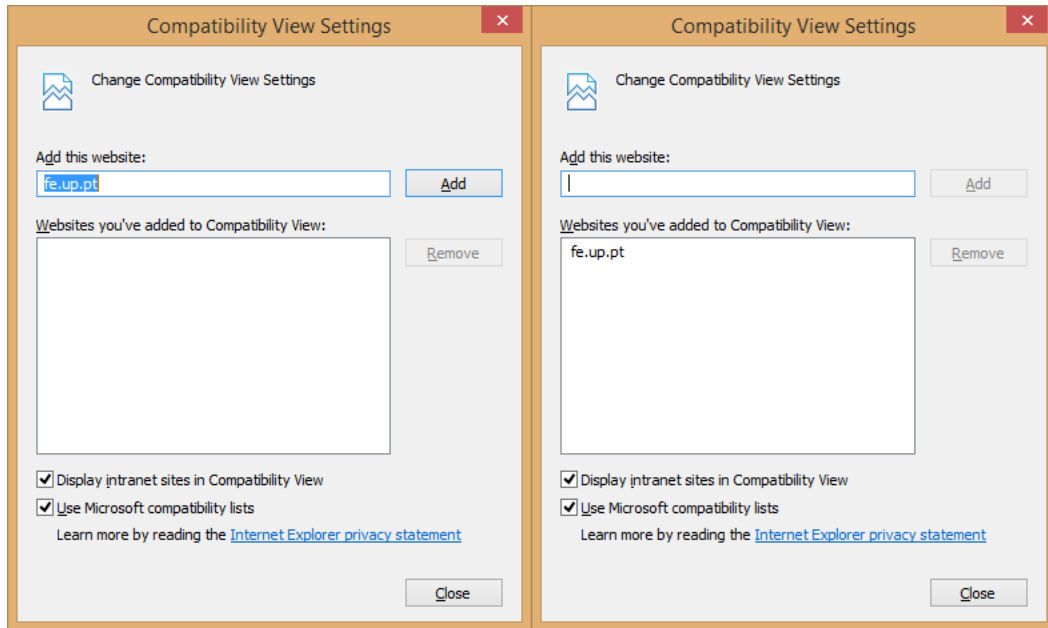


Figure 3. Enabling Compatibility View for the *fe.up.pt* domain

When you close “Compatibility View Settings”, the page will reload and the booking system will be correctly displayed, Figure 4.

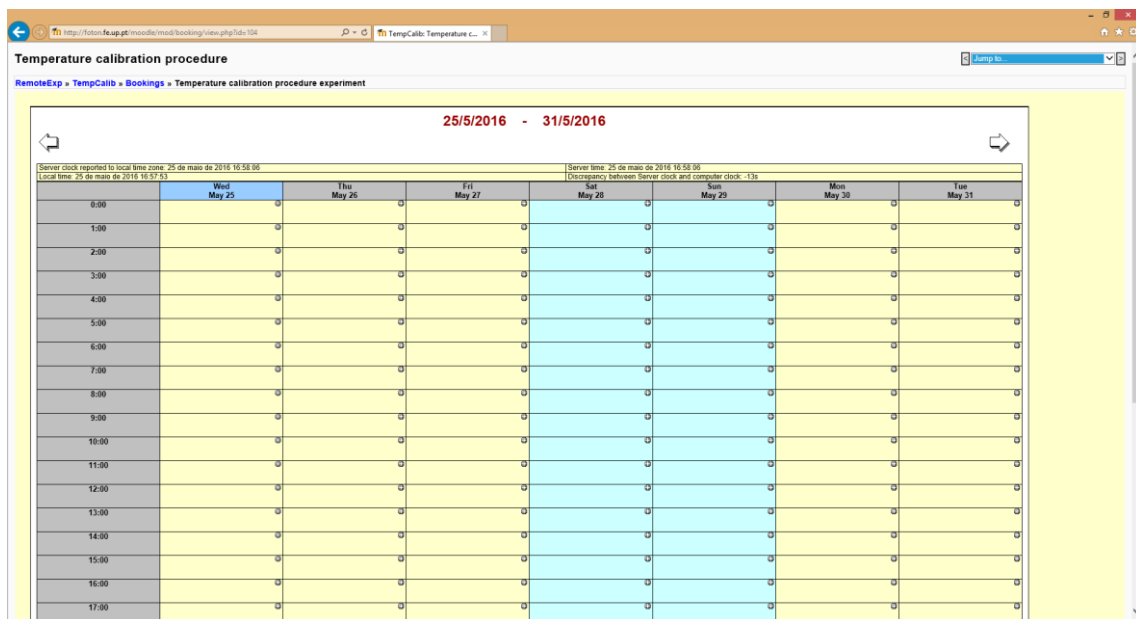


Figure 4. Booking system when the compatibility view is enabled